



IMI Europe Limited
2 Manor Farm
Milton Road
Impington
Cambridge CB4 9NF
England

Telephone +44 1223 236920
Fax +44 1223 235901
Email sales@imieurope.com

1 November 2004

FOR IMMEDIATE RELEASE

PRESS RELEASE

New Printhead Technologies Headlined at IMI European Ink Jet Conference

The IMI European Ink Jet Conference has become a key industry event in the fourth quarter, regularly the forum for news announcements. This year was no exception.

Konica Minolta announces new ink jet division

Akiyoshi Ohno, General Manager of Business Development at Konica Technology Center, announced that a new company, Konica Minolta Ink Jet Technologies Inc will be formed on 1 November 2004. This move completes the transition of Konica's existing R&D operations into a fully "business orientated" unit. Ohno will become Managing Director of the new company and added that their mission statement will be "to change the printing world with Konica Minolta's ink jet technology." Konica printheads are already used in a range of proofing, wide format and textile products, but this development promises further expansion of the company's OEM printhead business.

Spectra M-Class Printheads

Spectra previewed their new M-Class printheads at Drupa, but provided more detailed technical information at the IMI conference last week, prior to a full product launch early next year. Manufactured using Spectra's Shaped Piezo Silicon™ technology, the M-Class represents the 3rd generation of printheads from the US-based company. Printheads will be available in clusters of either four (Quad) or six (Hex) integrated modules, with custom configurations available for customers with specific requirements. Marc Torrey, Business Development Director explained that the multiple, precisely aligned jet modules offer a complete solution for system integrators and developers across a wide range of applications. He added that the M-Class is designed to offer "unparalleled flexibility" and modules are currently being sampled to key customers.

Spectra M-Class M300/10 Jet Module Specifications

Jets	300
Nozzle spacing	180 channels per inch
Resolution	180dpi
Native drop size	10pl
Ink capability	Solvent, UV cure & aqueous
Viscosity range	10-14cps

New Samsung MEMs Printhead

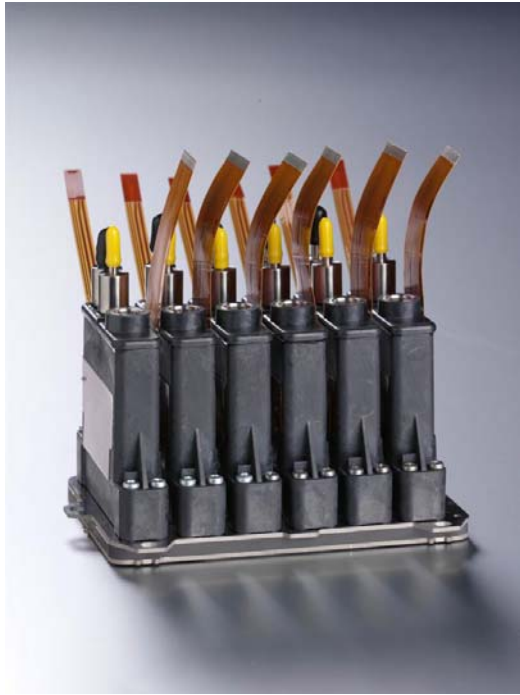
Described by Dr Chung, Project Leader at Samsung’s MEMs lab, as a “world premiere”, the Korean manufacturer unveiled a new ink jet printhead design and development architecture. The 192-channel printhead has a monolithic silicon structure and is manufactured using micro machining techniques based on MEMs technology. It is designed to target industrial applications and Chung claims that “all kinds of ink” can be used. Textiles could be the first target market – samples of printed silks were shown, but the future strategy and introduction schedule of the printhead is not yet known.

Samsung MEMs Printhead Specifications

Jets	192
Nozzle spacing	60 channels per inch (2 rows)
Resolution	120dpi
Native drop size	20pl and 30pl adjustable
Ink capability	All kinds available
Viscosity range	2-12cps

ENDS

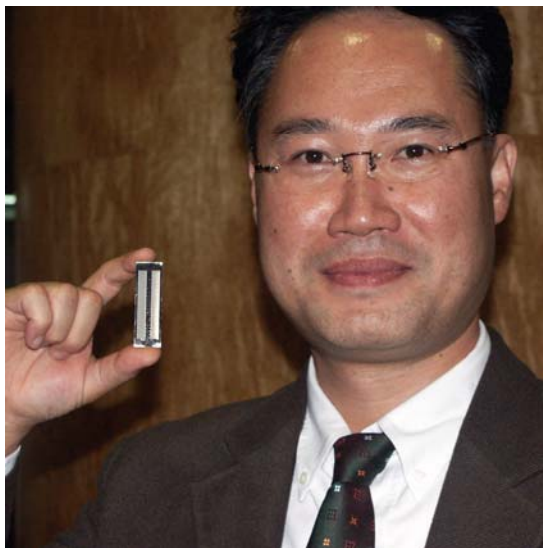
High-resolution photographs (300 dpi RGB JPEGs) to accompany this news release are available for download on the IMI web site www.imieurope.com



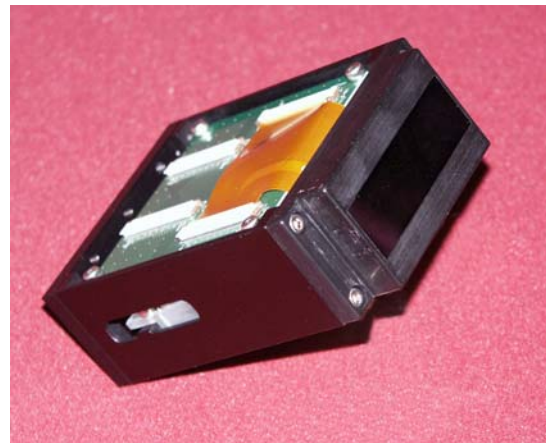
Spectra M-Class Printhead Hex Module



Spectra M-Class Printhead Quad Module



Dr Jaewoo Chung with new Samsung silicon piezo printhead



Samsung silicon piezo printhead



About IMI

The Information Management Institute runs the largest and most comprehensive conference and seminar programme in the digital printing industry. Each year over 2,000 industry technical and management personnel from over 600 companies attend around 20 events covering all forms of digital printing.

Contacts

Mike Willis, Managing Director, IMI Europe. Telephone: +44 1223 235900

Email: mike@imieurope.com Web: www.imieurope.com